



The Fleming Building

218 6th Ave | Des Moines, IA

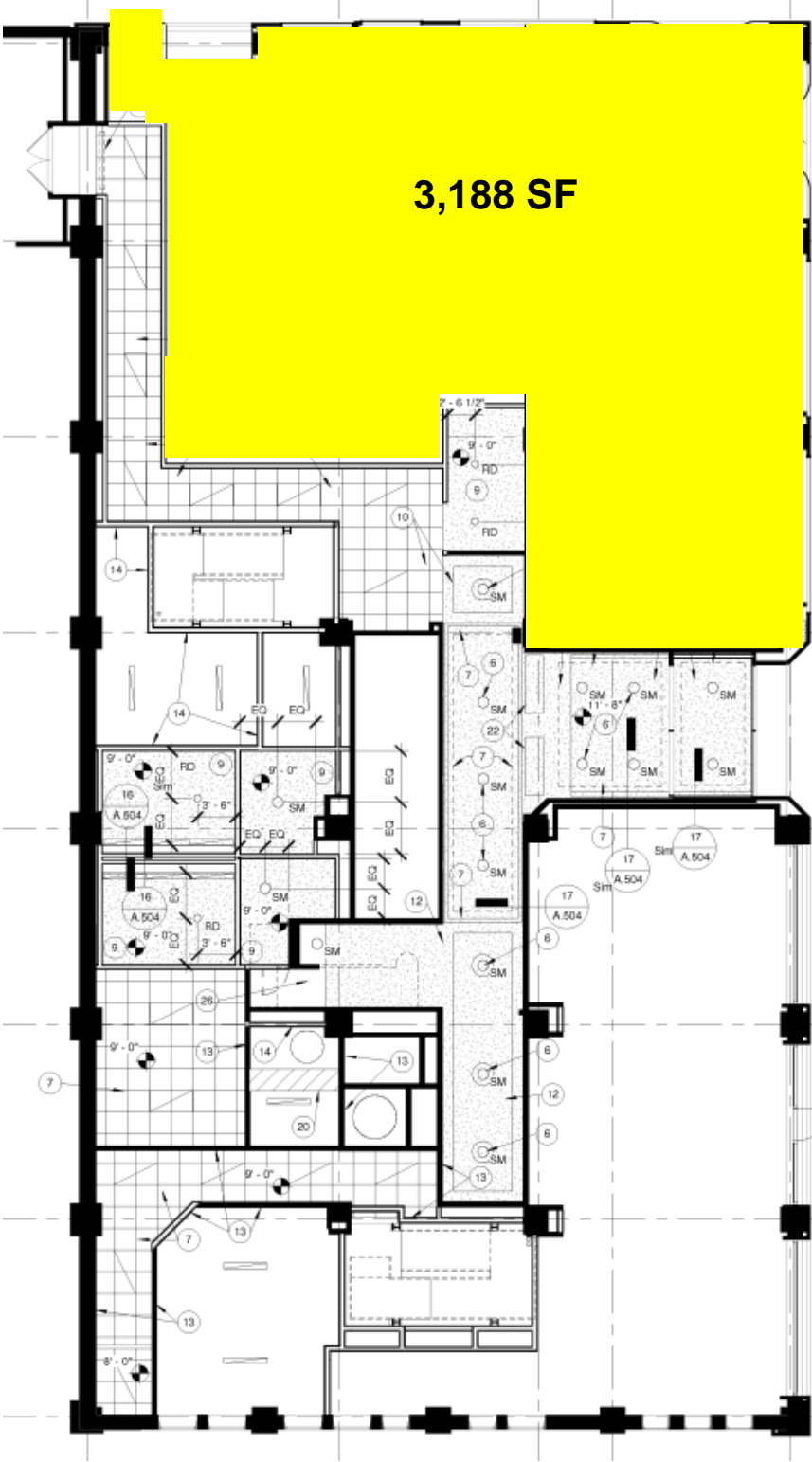


Available for Lease

The Fleming Building sits in the heart of the Des Moines Central Business District at the corner of 6th Avenue and Walnut Street. The mixed use project offers great visibility, unique architecture, and immediate access to all of downtown's retail amenities.

Justin Lossner
Vice President
+1 515 371 0846
justin.lossner@am.jll.com

For Lease
\$12.00/SF NNN



3,188 SF

Property Highlights

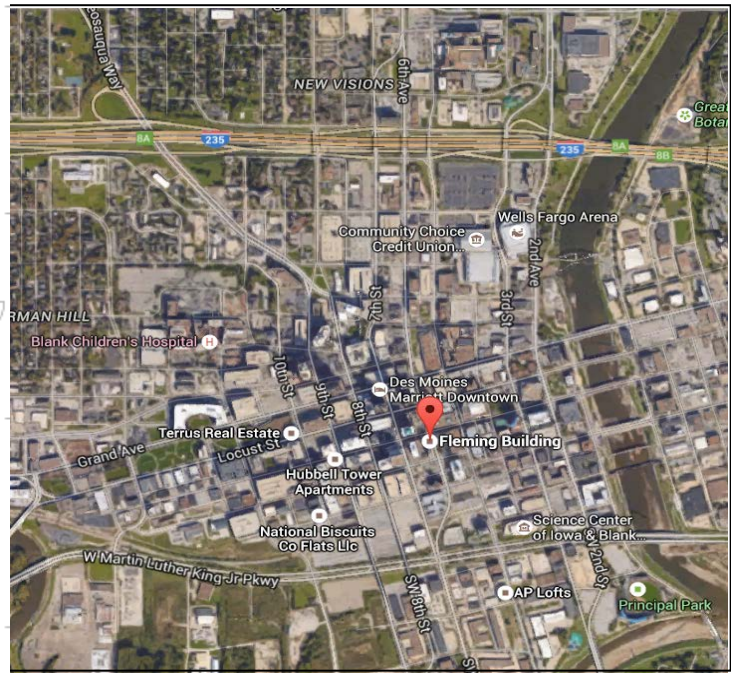
- Downtown Des Moines location
- Located on Walnut St. renovation district
- Skywalk access
- 3,188 SF available for lease

Terms

- Lease rate of **\$12.00 NNN** per square foot
- Estimated operating expenses are available upon request
- 5 year lease commitment
- Improvement allowance available for qualified leases

Features

- Convenient access to I-235 via 6th Ave
- Access to nearby parking
- Historical architecture



Justin Lossner
 Vice President
 +1 515 371 0846
 justin.lossner@am.jll.com

